

CPT1 series

Waterproof connectors



Anti-Oxidation



Water & Dust Proof



Aging Resistance



Easy to Connect and Disconnect



Flame Ratings (UL94-V0)



Wire to Wire



Features

Available in 2, 3, 4, 6, 8, and 12-cavity designs, Cvilux CPT1 offers reliability and performance under harsh environments.

- Connector & Housing Type: Housing for Male Terminals
- Sealable: Yes
- Mating Pin Diameter(mm): 1.59
- Operating Voltage (VAC) 250 / (VDC) 250
- Contact Current Rating (Max)(A): 13
- Operating Temperature (Max) 125 °C
- Degree of Protection IP67
- Circuit Application: Power & Signal

Application

CPT1 is an environmentally-sealed connector designed specifically for cable to cable applications on the engine or transmission, under the hood, on the chassis or in the cab. On signal level circuits in harsh environmental conditions, where even a small degradation in connection may be critical, the CPT1 Series general purpose connectors will provide the reliability and performance at the lowest cost.



2 WAY

Housing & Wedgelocks Plug & Receptade



3 WAY

Housing & Wedgelocks Plug & Receptade



4 WAY

Housing & Wedgelocks Plug & Receptade



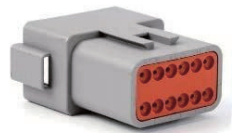
6 WAY

Housing & Wedgelocks Plug & Receptade



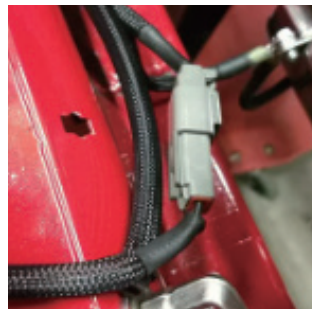
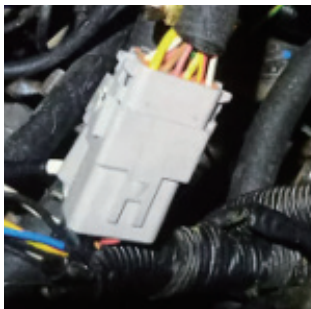
8 WAY

Housing & Wedgelocks Plug & Receptade



12 WAY

Housing & Wedgelocks Plug & Receptade



Since 1990

Proactive
Innovation
Efficiency

 **CviLux Group**
www.cvilux.com

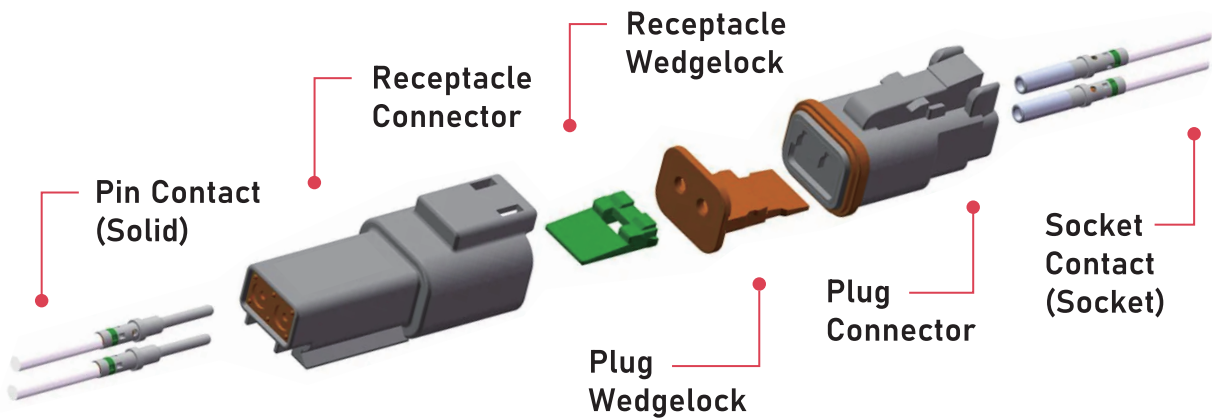
9F, No.9, Ln. 3, Sec. 1, Zhongzheng E. Rd., Tamsui Dist., New Taipei City
TEL:+886 2 2620-1000



Connector Tool Kit

	2 Cavities	3 Cavities	4 Cavities	6 Cavities	8 Cavities	12 Cavities
Plug						
Wedge Lock for Plug						
Receptacle						
Wedge Lock for Receptacle						

Installation of CPT1 Series Connector



Since 1990

Proactive
Innovation
Efficiency

CviLux Group
www.cvilux.com

9F, No.9, Ln. 3, Sec. 1, Zhongzheng E. Rd., Tamsui Dist., New Taipei City
TEL: +886 2 2620-1000

