

ix Industrial™



In response to the challenging and increasing demand for global digitalization technology, HIROSE and HARTING have jointly standardized a new miniaturized Ethernet mating interface in compliance with IEC/PAS 61076-3-124. The ix Industrial™ socket size is reduced by 70% compared to the existing RJ45 modular connectors, and offers ideal space saving cabling for applications with miniaturized requirements. The mass production is planned to start on April 2017.



CODICO®

CODICO GmbH
Zwingenstraße 6-8, 2380 Perchtoldsdorf, Austria
Telefon: +43 1 86 305-0, Fax: +43 1 86 305-5000
e-mail: office@codico.com, www.codico.com
FN 436940i, Landesgericht Wr. Neustadt

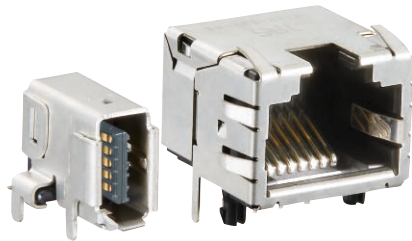
Zertifiziert nach ISO 9001:2015

HRS HIROSE
ELECTRIC
CO.,LTD.

Features

Compact

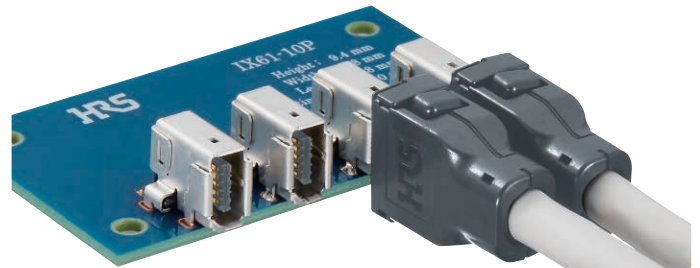
Reduces installation space by 70% compared to conventional RJ45 solutions, enables high design flexibility.



ix Industrial™

RJ45 Modular

The receptacles enable parallel 11mm pitch mounting, ideal for daisy-chaining applications. Contributes to unit size reduction.



Robust

HRS's unique shell design offers maximum stability on the PCB, increases locking strength and provides durable cable connection of the plug. Supports 5,000 Mating cycles.

High EMC Resistance

Optimized shielding design guarantees high EMC resistance to secure safe data transmission.

High Data Rate Transmission

Cat.6A high-speed Ethernet for 1Gbps/10Gbps/s data transmission.

Applications



Factory Automation & Robotics

Data Center

Security System

Transportation

Contact us



HIROSE Electric Co., Inc.
World Headquarters/Japan
+81-45-620-3491
<https://www.hirose.com/jp/>

HIROSE Electric (U. S. A.), Inc.
Headquarters/Chicago
+1-630-282-6700
<https://www.hirose.com/us/>

HIROSE Electric Europe B.V.
Headquarters/Amsterdam
+31-20-6557460
<https://www.hirose.com/eu/>

HIROSE Electric (Shanghai) Co., Ltd.
China Headquarters
+86-21-6391-3355
<https://www.hirose.com/cn/>

HIROSE Electric Singapore Pte. Ltd.
+65-6324-6113
<https://www.hirose.com/sg/>

HIROSE Korea Co., Ltd.
+82-31-496-7000
<http://www.hirose.co.kr/>